

Directions: Fill in the missing information in the grid below.

Symbol Name	Notes	Rests	Beats/Counts
Whole note			4
Quarter note			1
Sixteenth Notes & Rests	= 1 note = 4 notes		1/4
Half rest			2
Eighth notes	= 1 note = 2 notes		1/2
Dotted half notes			3
flag note head stem		stem note head	Treble clef

Label the parts of the notes indicated.

Name the symbol.

Lower Name

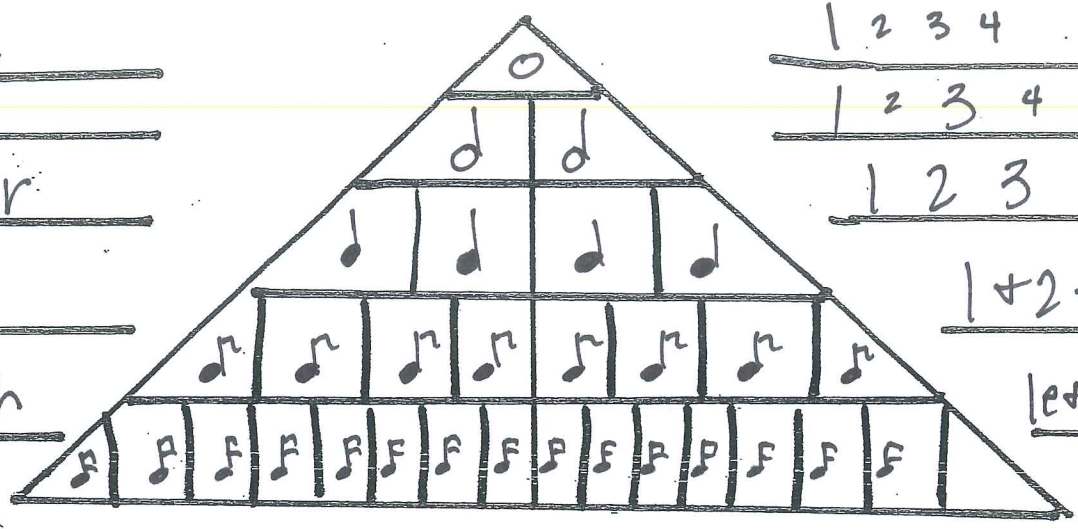
Date

Name of Symbol

Notes

Counting

Whole
Half
Quarter
Eighth
Sixteenth



1 2 3 4
1 2 3 4
1 2 3 4
1 + 2 + 3 + 4 +
1e + 2e + 3e + 4e +
4e + 4e

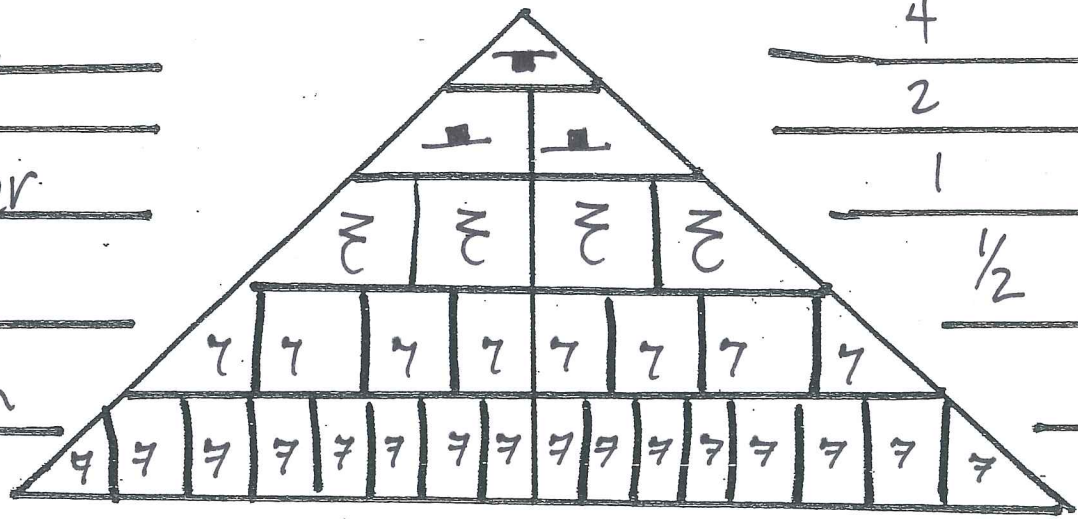
What does a dot do? Adds half the note's value to the note.

Name of Symbol

Rests

Counting

Whole
Half
Quarter
Eighth
Sixteenth



4
2
1
1/2
1/4

What does a dot do? Adds half the value of the rest to the rest. example: